

TECHNA[®]
high speed industrial doors

TECHNA[®]
high speed industrial doors

🏠 Mimarsinan O.S.B. 8.Street No.13 Melikgazi / KAYSERİ
☎ +90(352) 311 49 49 📠 +90(352) 311 49 50
✉ info@techna.com.tr 🌐 www.techna.com.tr

SANEC
AUTOMATIC DOOR SYSTEMS

KOSGEB
www.kosgeb.gov.tr
Başm. Yür. 30.04.2015
Başm. Yür. 1.000
Başm. Yür. 1.000
Başm. Yür. 1.000

HIGH SPEED
INDUSTRIAL DOOR SYSTEMS

SANEC
AUTOMATIC DOOR SYSTEMS

TECHNA-ROLL®

High Speed Rolling Doors

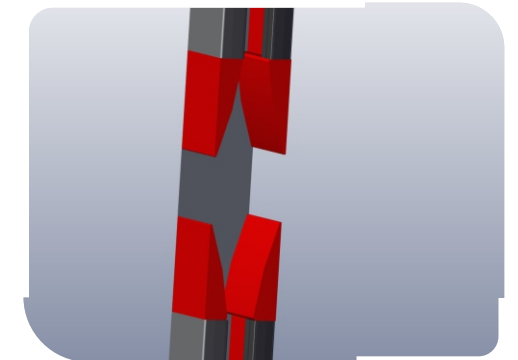
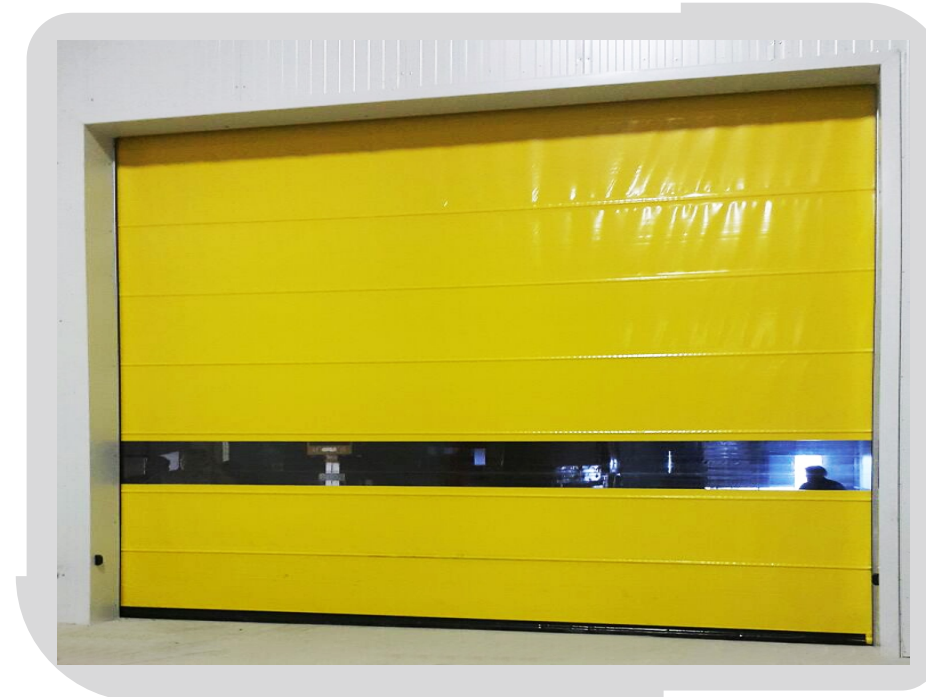
These doors are designed especially for indoor applications and intense use of the passing doors inside the establishments.

They are reinforced with steel bars to raise the wind resistance.

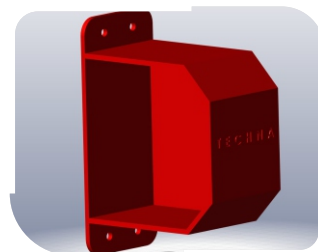
These are the doors that specially designed, laser-cut, all galvanized steel parts, working with imported 900-gr canvas and TECHNA ST-14 control unite with 0.7 m/s speed, and aiming to reduce the energy and time waste to minimum.

One of the apparent features of Techna Roll door system that it needs a little space for the door installment and provides maximum passing area.

Self fixing feature



There is definitely not any adjunct until 6000 mm on the specially bended, 2-mm galvanized steel pillars. If needed, electrostatic paint could be applied to the steel component.



Reflective Safety Photocell Casing

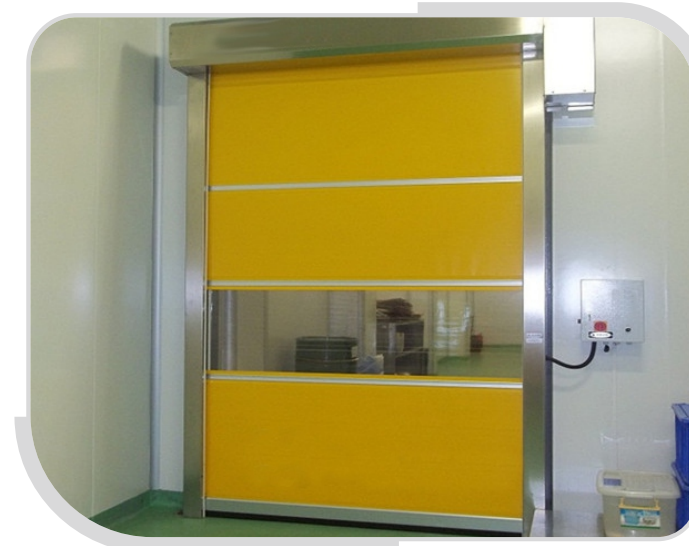


COLOR ALTERNATIVES



TECHNA-ROLL[®] MODULAR High Speed Rolling Doors

These doors are designed especially for indoor applications and intense use of the passing doors inside the establishments. The service and maintenance costs are quite low compared to the other doors. They are reinforced with aluminum bars to raise the resistance. Thanks to transparent PVC applications, as many windows as requested could be applied. The visual changes could be made by printing on the canvas. These are the doors that specially designed, laser-cut, all galvanized steel parts, working with imported 900-gr canvas and TECHNA ST-14 control unite with 0.7 m/s speed, and aiming to reduce the energy and time waste to minimum. They are used for the doors of markets, shopping malls, food facilities, cold storages, pharmacy sector, textile sector, industrial facilities, welding cabins and robot cabins. One of the apparent features of Techna Roll door system that it needs a little space for the door installment and provides maximum passing area. There is definitely not any adjunct until 6000 mm on the specially bended, 2-mm galvanized steel pillars. If needed, electrostatic paint could be applied to the steel component.



- Optical bottom safety systems could be connected thanks to the aluminum bottom base and bottom seal system.
- Thanks to the aluminum modular profiles, in case of a damage, it could be fixed by replacing only the damaged part.
- It values up your space due to its visual richness.
- For the intermediate pass doors within the establishment
- For the doors that the wind resistance is not high
- To protect the hygiene of the workshops at the food facilities
- For the entrance and exit doors to protect the humidity and heat of the textile establishments
- For the cabin doors to get protected from the harmful beams on the welding robot cabins
- For the intermediate pass doors to separate the sections of conveyor and band systems
- For the doors requiring sterile area in the pharmacy sector
- For the shop and storage doors at the markets and shopping malls
- At the cold storage
- For the doors of deep freezers
- For all the doors with intense passage of forklift and passengers

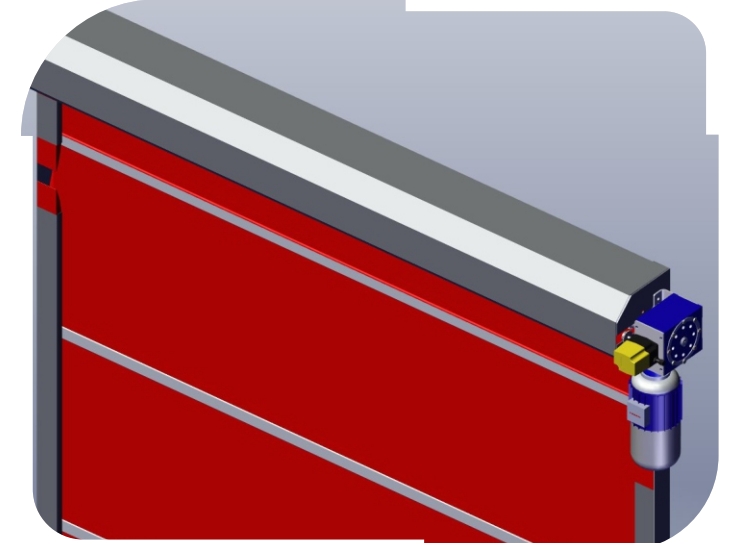
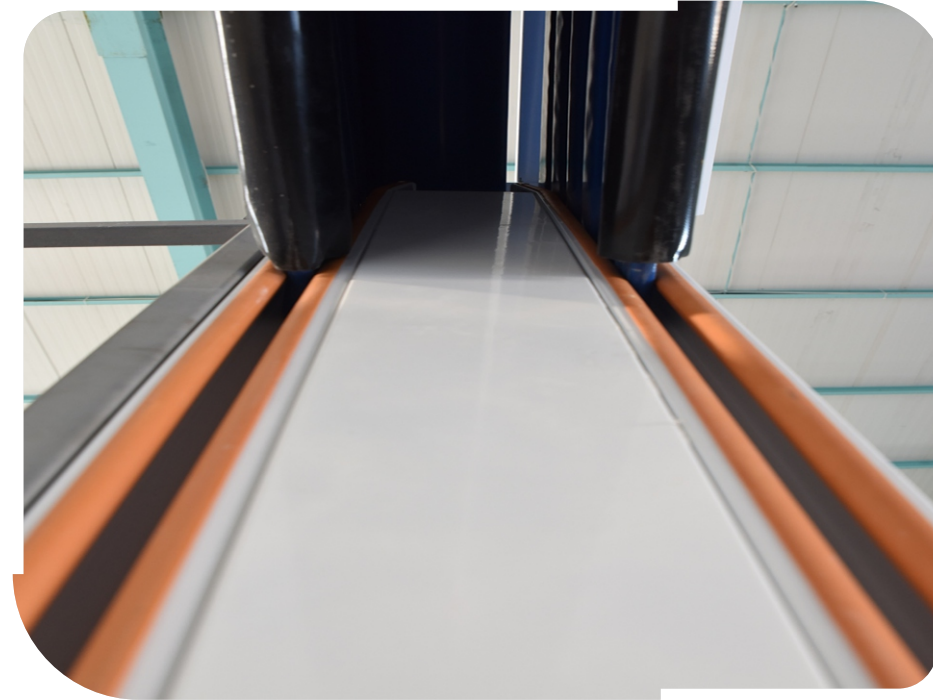
COLOR ALTERNATIVES



TECHNA-ROLL[®] FREEZER

High Speed Rolling Doors

- It is designed to use especially for the doors of deep freezers and cold storages.
- It could work between -25 °C and +40 °C.
- It could be installed as single or double-mechanism with the insulated canvas system.
- It reduces the heat loss of the environment thanks to its fast opening and closing.
- It provides an exact partition between the environment at room temperature and deep freezer thanks to its double-mechanism system.
- For the doors that the wind resistance is not high
- For the entrance and exit doors to protect the humidity and heat of the textile establishments
- At the cold storage
- For the doors of deep freezers
- For all the doors with intense passage of forklift and passengers



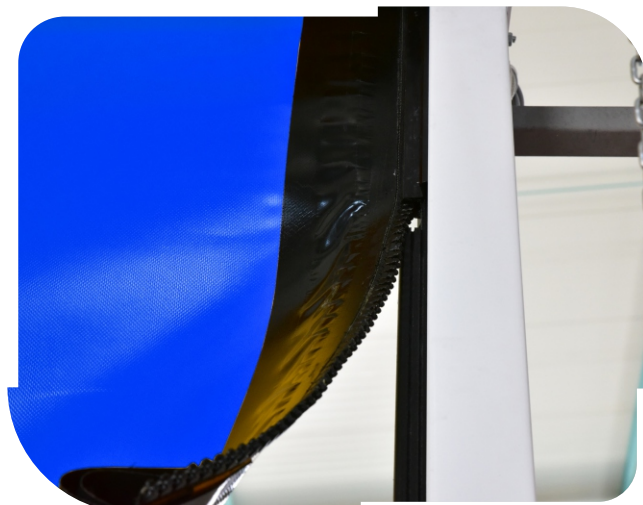
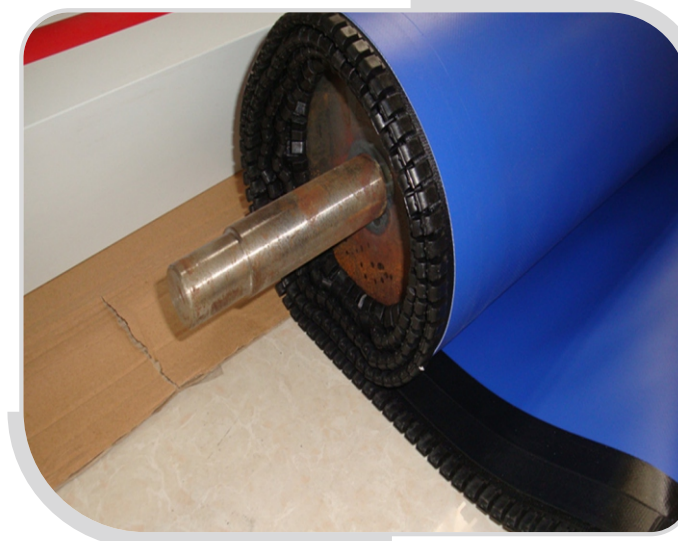
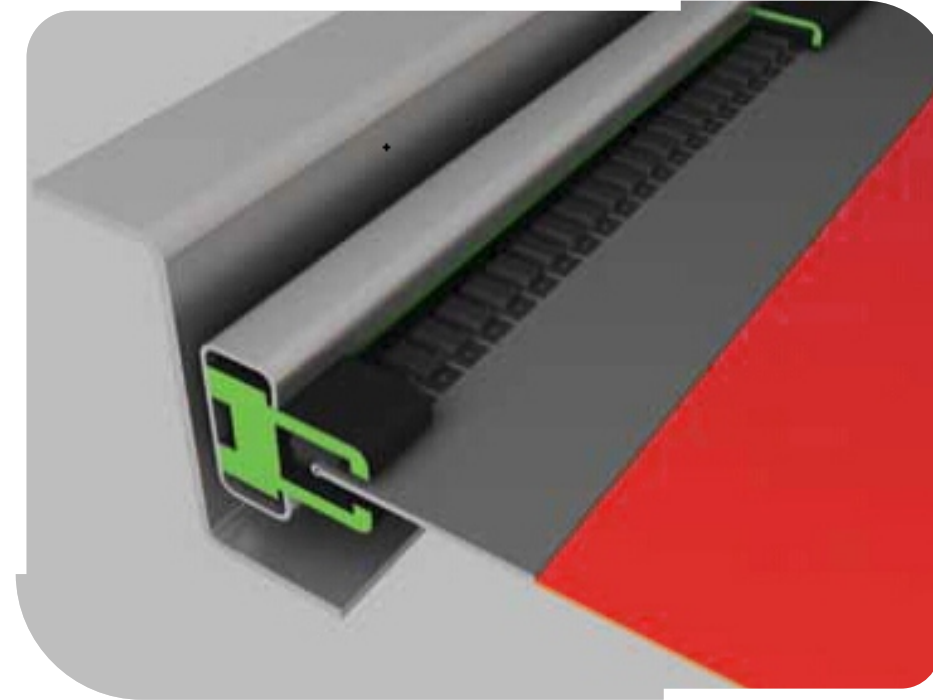
COLOR ALTERNATIVES



TECHNA-ROLL[®] ZIPPER

High Speed Rolling Doors

- With the Zipper system used on the doors, the doors works without any other metal component.
- The possible accident risks are decreased to minimum thanks to its soft bottom base.
- It could be used inside and outside in large measurements thanks to its high wind strength.
- It continues to work thanks to its self fixing feature in case of possible strokes.
- For the intermediate pass doors within the establishment
- To protect the hygiene of the workshops at the food facilities
- For the entrance and exit doors to protect the humidity and heat of the textile establishments
- For the cabin doors to get protected from the harmful beams on the welding robot cabins
- For the intermediate pass doors to separate the sections of conveyor and band systems
- For the doors requiring sterile area in the pharmacy sector
- For the shop and storage doors at the markets and shopping malls
- At the cold storage
- For the doors of deep freezers
- For all the doors with intense passage of forklift and passengers



COLOR ALTERNATIVES



TECHNA-FLEX[®]

High Speed Folding Doors

These doors are generally used for outdoor applications and have high wind resistance. They are appropriate to intense use.

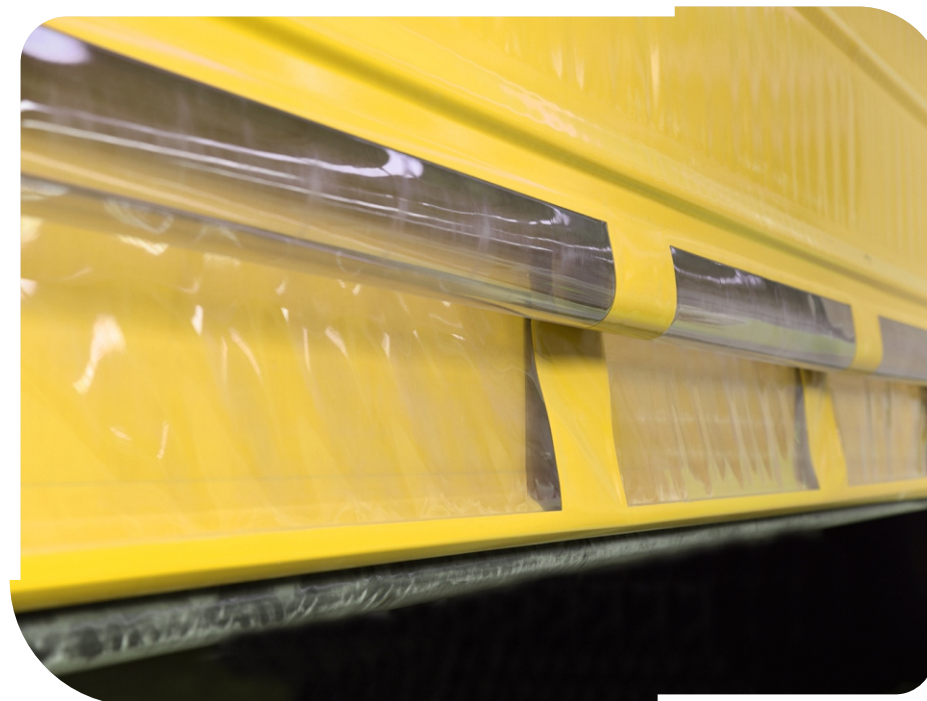
These are the doors that specially designed, laser-cut, all galvanized steel parts, working with imported 900-gr canvas and TECHNA ST-14 control unite with 0.7 m/s speed, and aiming to reduce the energy and time waste to minimum.



Our door adopts to the fast-passing traffic thanks to Metal Mass Detector and Remote Control.



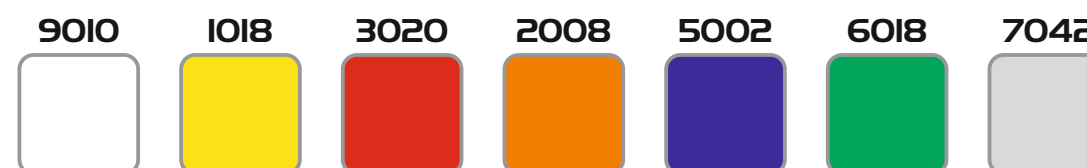
Techna Flex doors are reinforced by special pipes located depending on the measurement to keep the wind resistance high. In this way, the door Works trouble-free even at the strong winds.



The reinforced wind support bars enable the door to work trouble-free against the powerful winds.



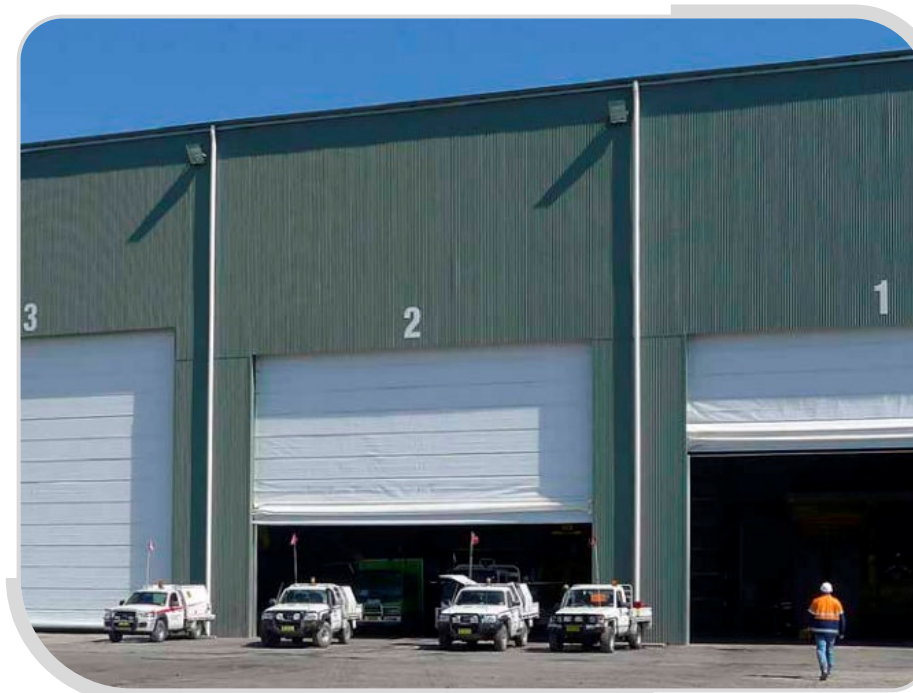
COLOR ALTERNATIVES



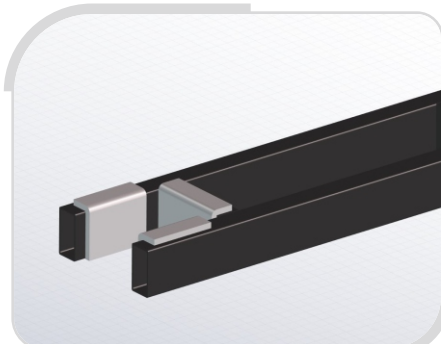
TECHNA-FLEX[®] MEGA

High Speed Folding Doors

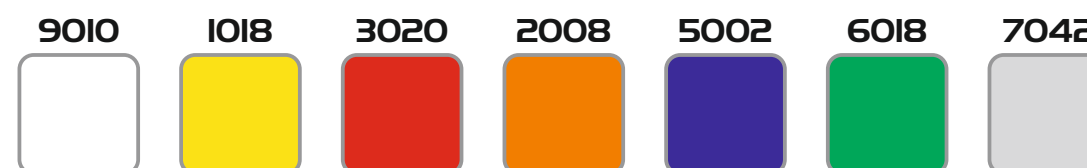
- It is a door model that is used for in very large measurements.
- It is resistant to wind and external effects thanks to its special steel construction.
- It has double canvas system.
- It works with imported 900-gr canvas and TECHNA ST-14 control unite with 0.25 m/s.
- They are preferred for trouble-free entrance and exit of large and special vehicles.



The reinforced wind support bars enable the door to work trouble-free against the powerful winds.

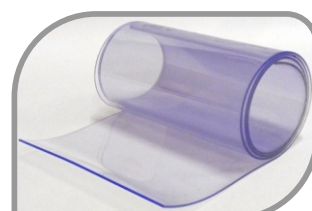
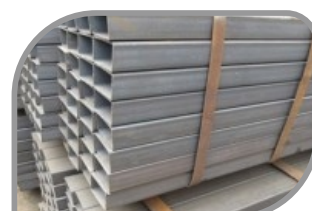


COLOR ALTERNATIVES



TECHNICAL FEATURES

MOTOR	380 VAC (0,75 - 5,5 kW)
REDUCTOR	50 -63 -70 BODY ALUMINUM
BRAKE	200 VDC
SWITCH	CHAIN TRANSFER TOUR LIMIT SW
CONTROL UNIT	TECHNA ST-14 (ENGLISH MENU)
SPEED	0,7 M/SN
SAFETY	SAFETY PHOTOCELL (REFLECTIVE)
BUTTON	STANDARD ON THE PANEL
FLASHING LIGHT	OPTIONAL
CURTAIN	IMPORTED 900 GR7M2
WINDOW	1 LINE STANDARD
PILLARS	2 MM GALVANIZED STEEL
WICK - SEAL	PVC PILLAR WICKS
UPPER COVER	STANDARD
THICKNESS OF CANVAS	0.8 MM
HEAT RESIST. OF CANVAS	-30, +70
CONTROL PANEL	IP 65
INVERTER	OPTIONAL
ENCODER	OPTIONAL
MOTOR COVER	OPTIONAL
STAINLESS STEEL	OPTIONAL
BOTTOM SAFETY SYSTEM	OPTIONAL
METAL MASS DETECTOR	OPTIONAL
REMOTE CONTROL	OPTIONAL
APPROACH SENSOR	OPTIONAL
ADDITIONAL BUTTON	OPTIONAL
ANTI-CRASH SYSTEM	OPTIONAL



OPTIONAL PRODUCTS AND ACCESSORIES



TECHNA ST - 14
CONTROL UNIT



INVERTER



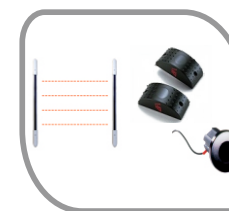
METAL MASS
DETECTOR



REMOTE CONTROL



REFLECTIVE PHOTOCELL



PHOTOCELL



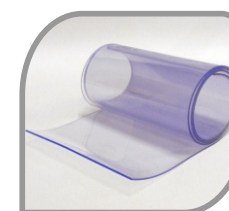
PNEUMATIC BOTTOM
SAFETY SET



OPTICAL BOTTOM
SAFETY SET



MOTOR CASE



ADDITIONAL WINDOW



FLASHING LIGHT



AUDIBLE WARNING SYSTEM



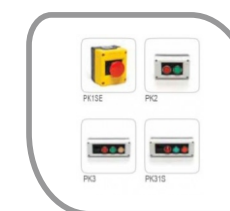
INFRARED RADAR



ENCRYPTED CARD PASS
SYSTEM



CORDED SWITCH



BUTTON SET